

# Mobility and Inclusion Unit, DfT

Department for  
**Transport**



# Transport crime

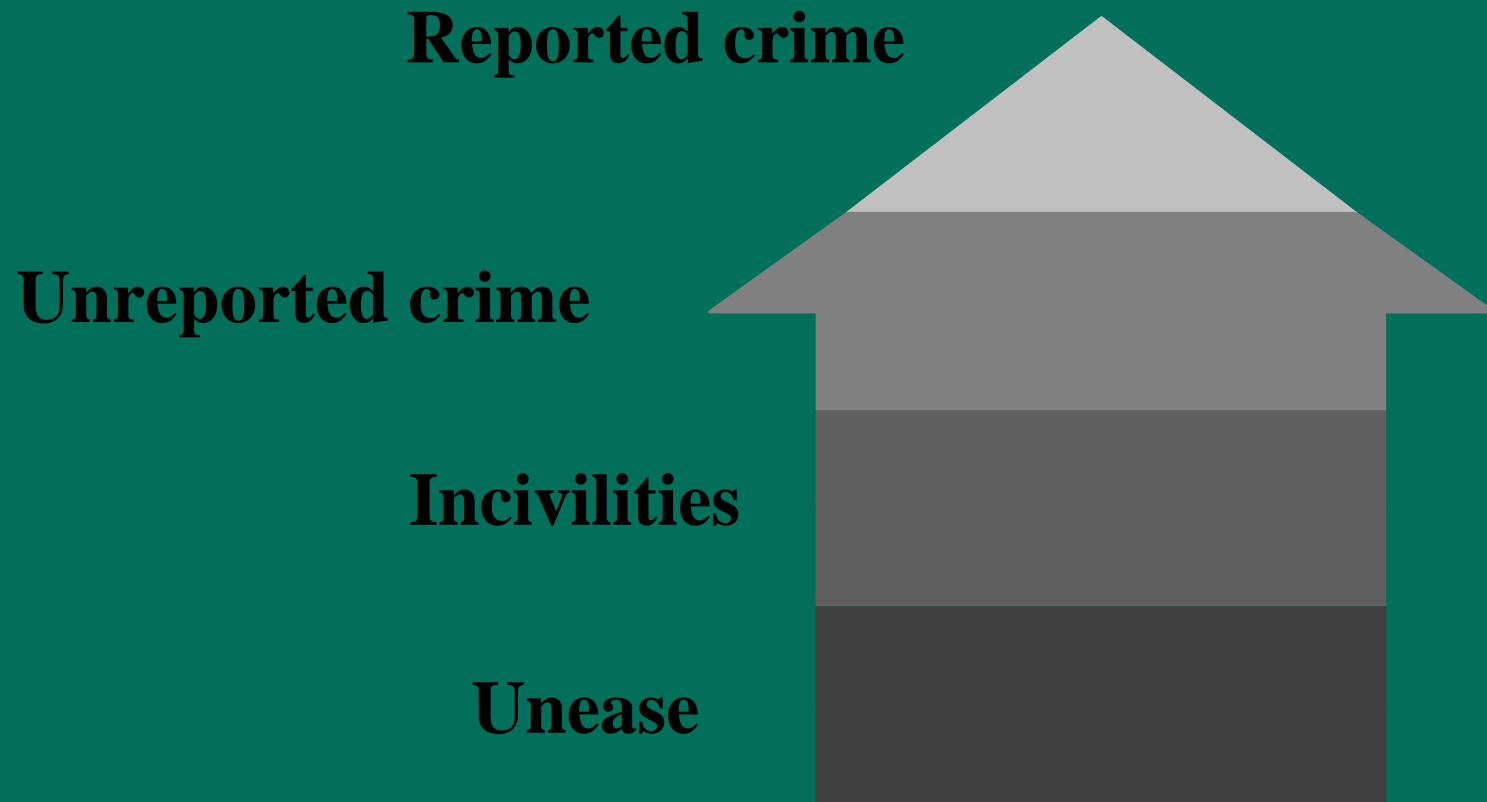
Department for  
**Transport**

- The facts
- Reducing it
- Partners



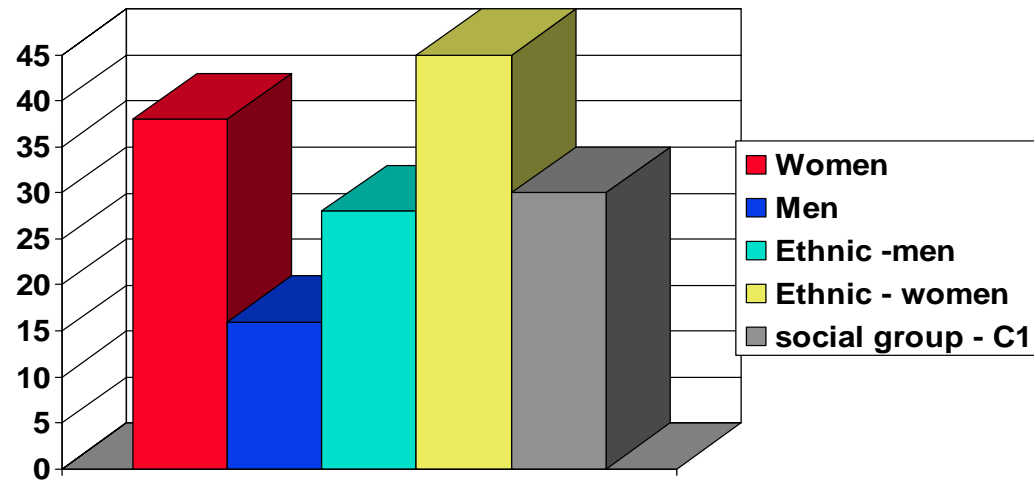
# Fear of Crime

Department for  
**Transport**



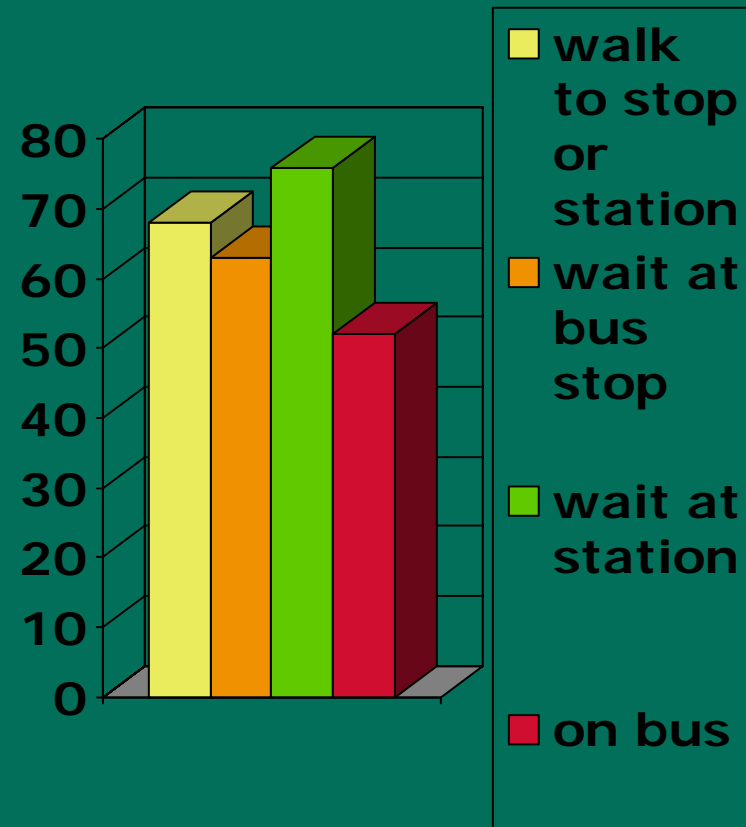
# Affects people differently

## FEAR OF CRIME



# PASSENGERS' CONCERNS

- After dark
- Walking & waiting
- Safest on vehicle

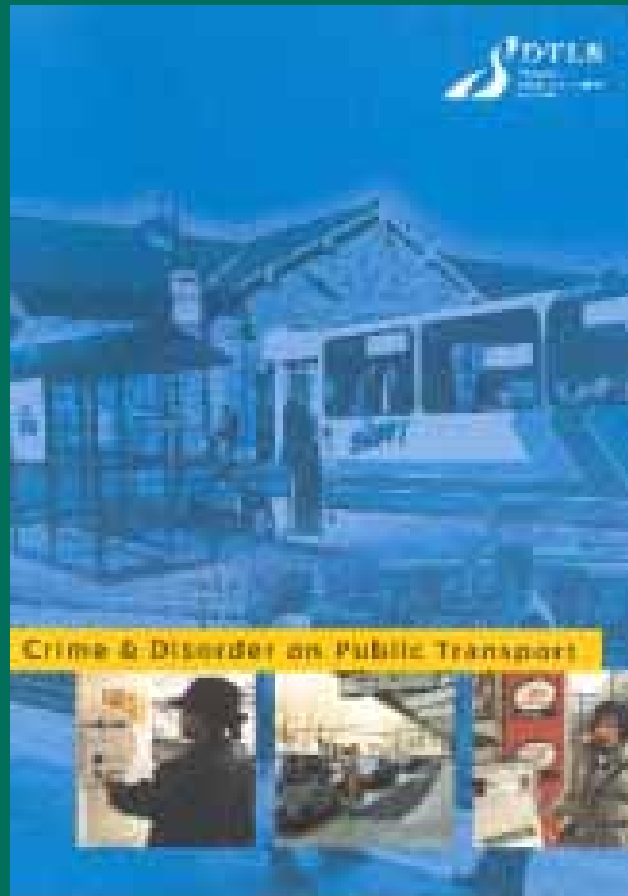


# Fear of crime 2002

- • Strong support for CCTV
- • Design of the environment
- • Availability of information
- • On street help points
- • Presence of police, staff, neighbourhood wardens
- • Access to taxis
- Safe routes for walking
- • Addressing the transport to home journey

# Crime and Disorder on Public transport

Department for  
**Transport**

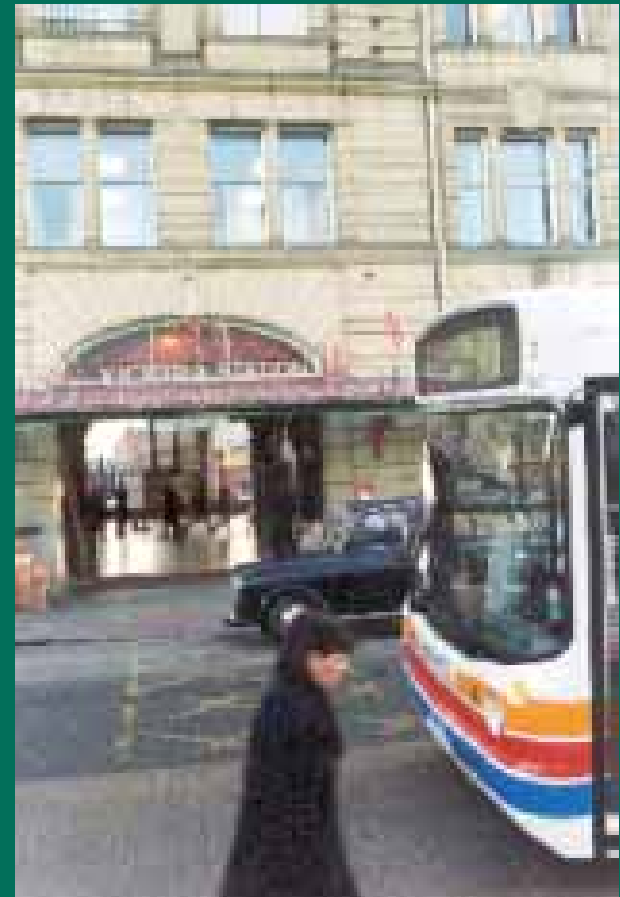


- DfT prepared briefing paper
- Held seminars for CDRPS in all Government Office regions
- Encourage partnerships to make links with transport planners and providers

# Reducing transport crime

Department for  
**Transport**

- Mapping
- Buses
- Trains
- Secure routes
- Young people



# Partnerships

- BTP
- Rail organisations
- PTAs
- Local authorities

Manchester

Hall I'Th'Wood

Ramsgreave and Wilpshire

Langho

Whalley

Clitheroe



**Miranda Carter**  
**miranda.carter@dft.gsi.gov.uk**  
**020 7944 4913**

Mobility & Inclusion Unit

Department for Transport